

Installation Guide

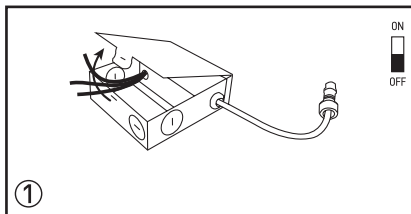
IMPORTANT SAFETY INFORMATION

- WARNING : RISK OF SHOCK** House electric current can cause painful shock or serious injury unless handled properly. For your safety, always remember to :
 - A : Turn off the power supply at the fuse or circuit breaker box before you install the fixture.
 - B : Ground the fixture to avoid potential electric shocks and to ensure reliable starting.
 - C : Double-check all connections to be sure they are tight and correct.
 - D : Wear rubber soled shoes and work on a sturdy wooden ladder.
- This fixture is designed for use in a circuit protected by a fuse or circuit breaker. It is also designed to be installed in accordance with local electrical codes. If you are unsure about your wiring, consult a qualified electrician or local electrical inspector, and check your local electrical code.
- WARNING : RISK OF CUTS** Some metal parts in the fixture may have sharp edges. To prevent cuts and scrapes, wear gloves when handling the parts.
- Account for small parts and destroy packing material, as these may be hazardous to children.

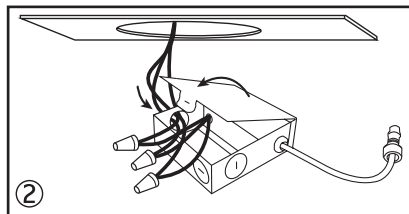
Product Specification

Size	Wattage (W)	Voltage (V)	Rated Input Frequency (Hz)	Dimension (DxH)
4in	9W	AC120V	50/60Hz	Φ123*22mm
6in	15W	AC120V	50/60Hz	Φ174.4*22mm

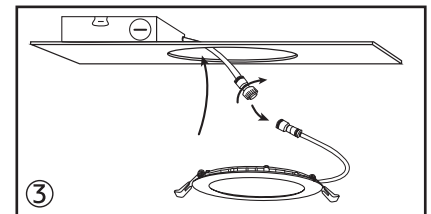
Embedded in installation



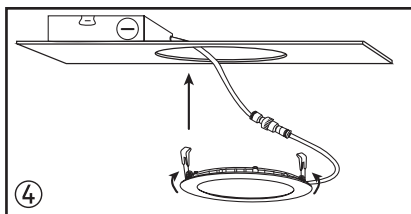
1. Make sure the fixture is disconnected from the J-Box. Open it.



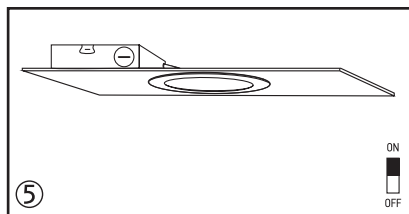
2. Connect the wires as shown in step #2. Use wire nuts to insure you have a proper connection. Close the J-Box when completed.



3. Insert the J-Box into the "cut hole", leaving the connection cable outside. Connect the fixture to the J-Box by inserting the cable and securing it with a cap as shown in step #3.



4. Push the spring loaded clips upwards and insert the fixture base into the mounting hole. Release the clips and the fixture will be "pulled" into place against the ceiling.



5. Once assembly is complete, turn the power on to ensure the fixture is operating properly.

Caution

- WARNING : Risk of fire.** Use AC120V 50/60Hz circuits.
- Suitable for damp locations. Before installing your lighting fixture, thoroughly review enclosed installation manual. If you do not have sufficient electrical wiring experience, please have your fixture installed by a qualified licensed electrician. All electrical connections must be in accordance with local and National Electrical Code (NEC) standards. Reliable operating temperature is -20 to +40 degrees Celsius (-4 to +104 degrees Fahrenheit).
- Please obey fire prevention regulations, do not cover the fixture with any heat insulated materials.
- Do not change the LED light source or driver inside under any circumstance.