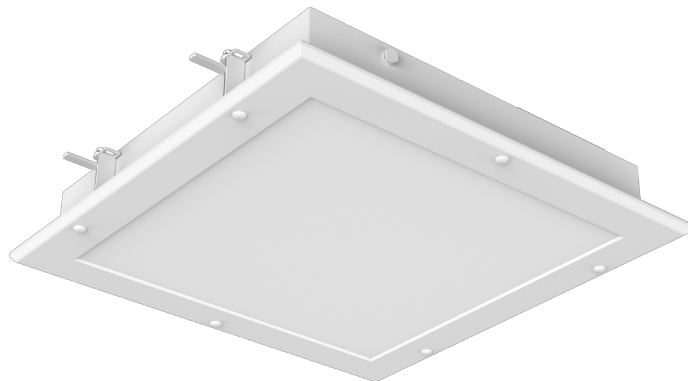
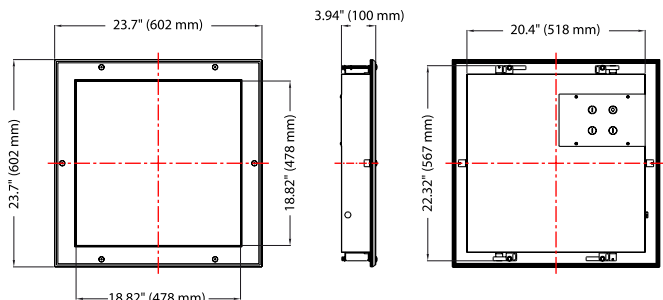




RoHS



Electrical specifications

Model no.	TLCPUS22W60AD
DLC ID	-
Power $\pm 10\%$	40W / 48W / 60W
Input voltage	100-347 V
Frequency	50/60 Hz
Efficacy $\pm 3\%$	125 lm/W
Power factor	>0.9
Dimmable	0-10 V
Surge protection	CM(L/N):2KV, DM (L/N-PE) :2KV
Total harmonic distortion	$\leq 20\%$

Photometric specifications

CRI	>80
CCT	3500K / 4000K / 5000K
Beam angle	110°
Light output $\pm 3\%$	40W: 5 000 lm
	48W: 6 000 lm
	60W: 7 500 lm

Mechanical specifications

IP rating	IP65 / IK03
Material	Aluminum
Lens	Frosted polycarbonate
Net weight	9.1 kg
Product dimensions	$\pm 23.7'' \times 23.7'' \times 3.94''$
	$\pm 602 \times 602 \times 100 \text{ mm}$
Operating humidity	10% ~ 90%
Operating temperature	-25°C ~ 40°C
Lumen maintenance	>85% at 100 000 hours

Product description:

- Selectable power and CCT.
- Fully welded construction.
- Concealed front mounting brackets.
- Antibacterial coating.
- Fraunhofer IPA certified for cleanrooms.
- Compliant with cleanrooms of ISO cleanliness classes 3 to 9.
- UGR <22.

Applications:

Dust-free factories, laboratories, hospitals, pharmaceutical plants, etc.