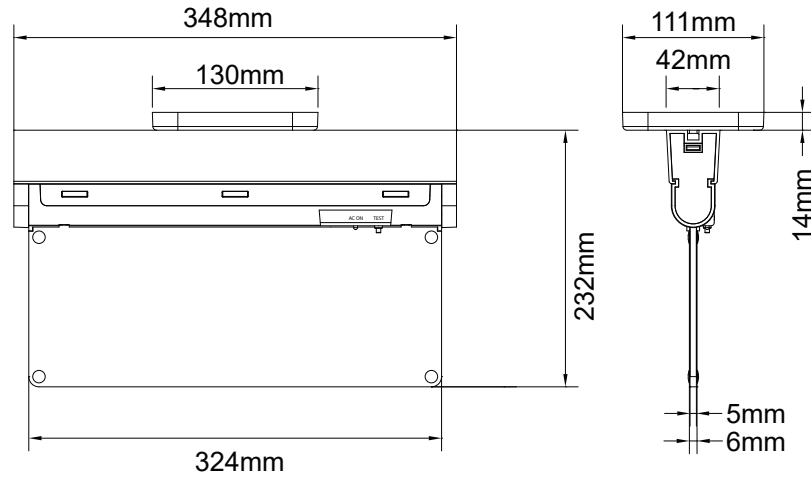




SLIM RUNNING MAN EMERGENCY LIGHT



WARNING NOTE

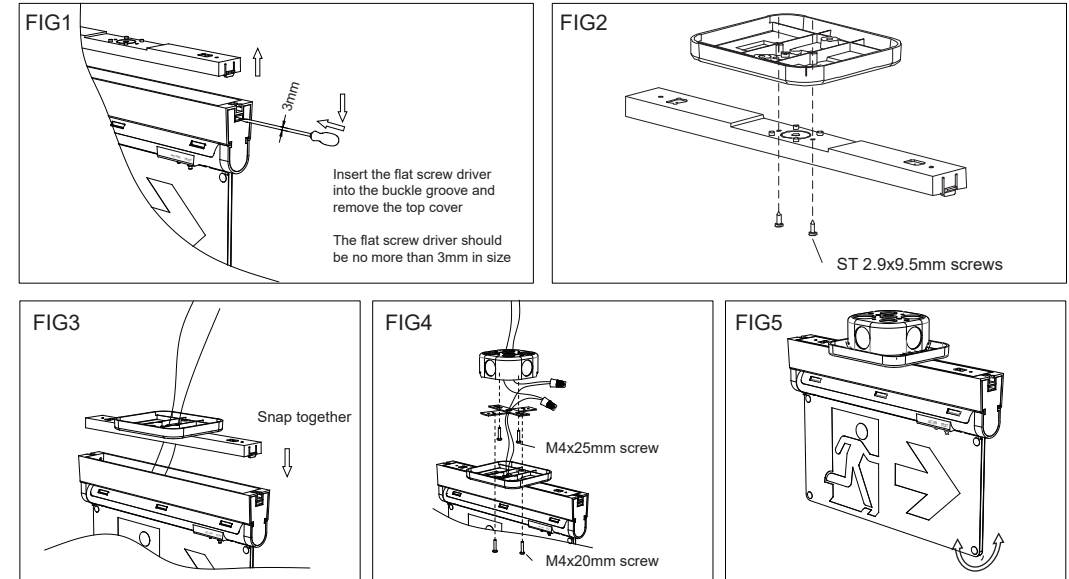
This product is certified by UL security standards. This product has the advantages of beautiful appearance, convenient installation and maintenance, energy saving and consumption reduction, and long service life. Mainly used for airports, stations, docks, theaters, shopping malls, basements, confidential rooms, civil defense engineering and other places where personnel gather or move more, to provide safety exit instructions in the event of power failure or power outage.

All servicing should be performed by qualified personnel only. Allow battery to charge for 24hrs before first use.

MODEL LIST:

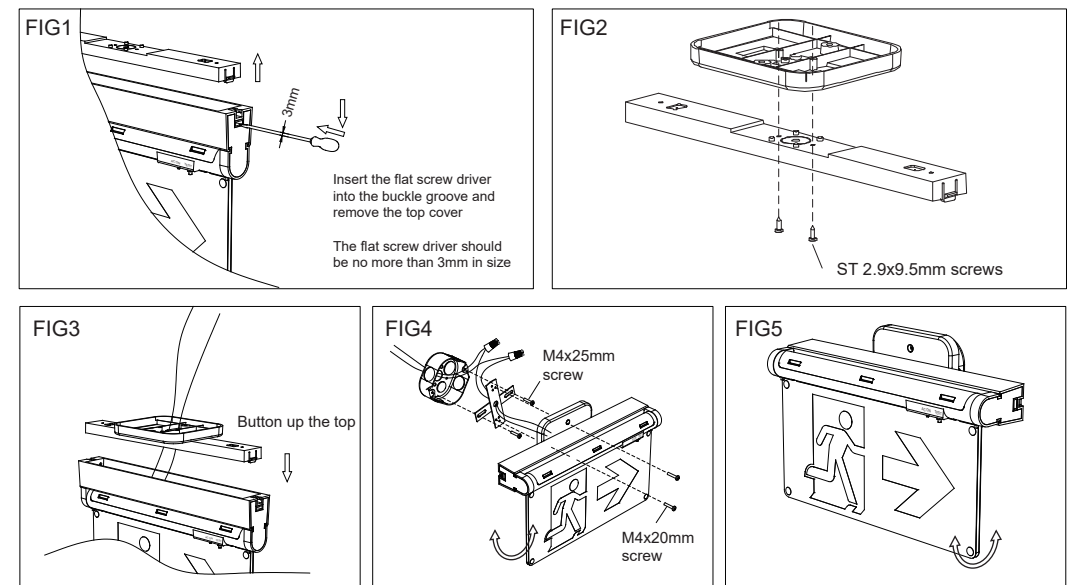
Model No.	TLESPU02
Rated voltage	120-347Vac 50/60Hz
Input Ratings	3.5W
Input Current	30mA
Emergency Output Ratings	3.6V / 1.5W
Light source	(16) LEDS
Battery	Ni-Cd 3.6V 900 mAh
Battery Life	4 years
Charging time	24H
Emergency Run Time	180 mins
Use environment	Dry Locations
Operating Temp Range	0°C-40°C
Protection class	Class II
Dimensions	348mm×232mm×42mm
Warranty	2 years

INSTALLATION INSTRUCTION DIAGRAM:



1. Remove the top cover using flat driving(Fig1)
 2. Connected the top cover with the canopy using the screws(- Supplied) .(Fig2)
 3. Feed AC supply wire through top cover and canopy center hole, snap top cover and the fixture together. (Fig3)
 4. Assemble canopy onto Junction box with screws (supplied) and make proper wire connections.
 5. Black Wire (L); White Wire (N); (Fig 4)
 6. Use screws (supplied) to tighten canopy to mounting plate (spider plate/cross bar)(Fig5)
6. The unit can be installed on any surface, you may rotate the Acrylic panel in any angle from 0 degrees to 180 degrees.(- Fig5)

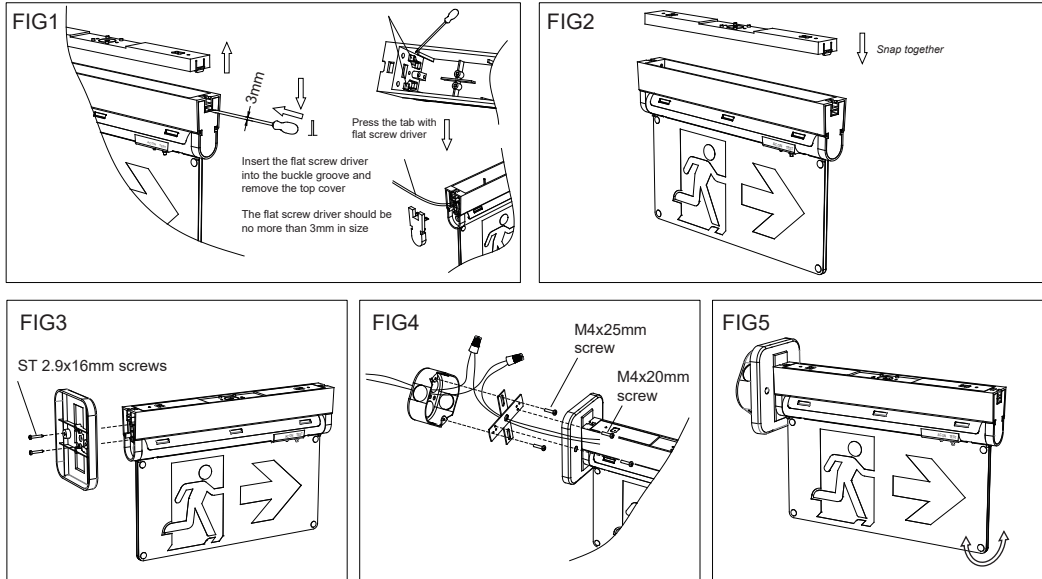
Wall Mount



1. Remove the top cover using flat driving(Fig1)
2. Connected the top cover with the canopy using the screws (Supplied) .(Fig2)
3. Feed AC supply wire through top cover and canopy center hole, snap top cover and the fixture together.(Fig3)
4. Assemble canopy onto Junction box with screws (supplied) and make proper wire connections.

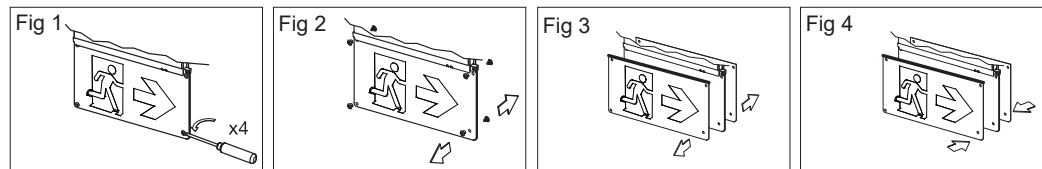
- Black Wire (L); White Wire (N);(Fig4)
5. Use screws (supplied) to tighten canopy to mounting plate (spider plate/cross bar)(Fig5)
 6. The unit can be installed on any surface, you may rotate the Acrylic panel in any angle from 0 degrees to 180 degrees.(- Fig5)

Wall Side Mount



1. Remove the top cover scerw driver and remove the end cap. using a flat screw Pull out the wires through the side.(Fig1)
2. Snap the top cover into the fixture.(Fig2)
3. Pullout all AC supply wires and feed the wires through the holes of end cap and then canopy.(Fig3)
4. Assemble canopy and end cap to metal bracket with screws (supplied) and make proper wire connections.(Fig4)
5. Using screws (supplied) tighten canopy to spider plate (crossbar) .(Fig5)
6. The unit can be installed on any surface, you may rotate the +Acrylic panel in any angle from 0 degree to 180 degree. (Fig1)

CHANGING OR REPLACING PICTOGRAM

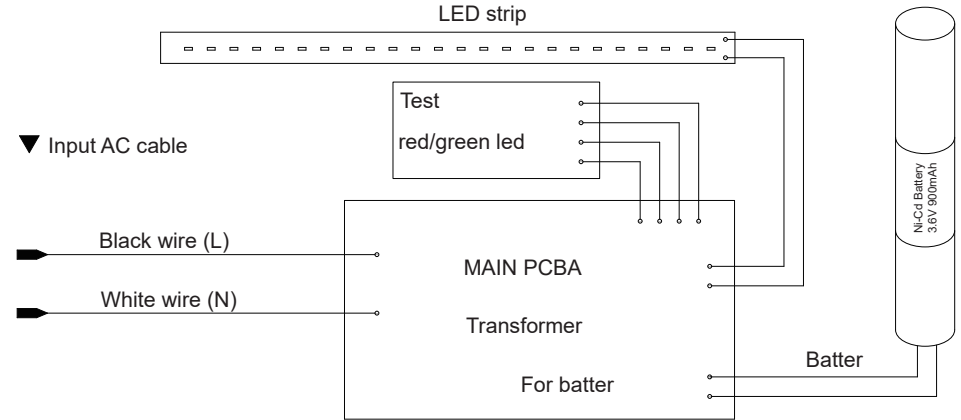


1. Remove the button (Fig1, Fig2)
2. Change to desired pictogram (Fig3)
3. Reinstall buttons and snap them together together (Fig4)

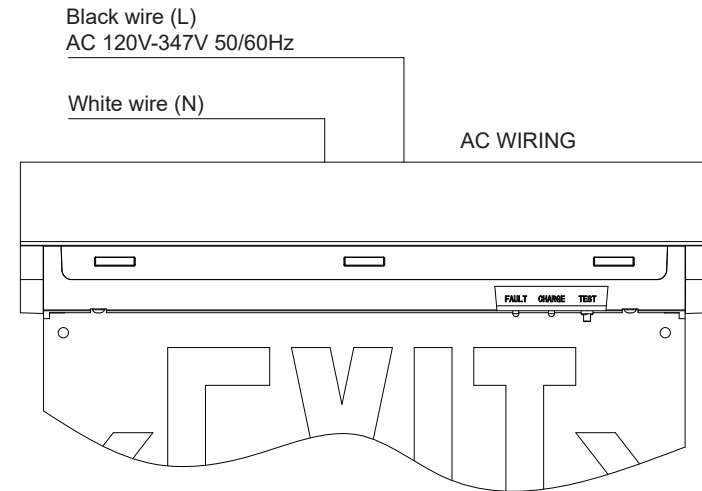
READ AND FOLLOW ALL SAFETY INSTRUCTIONS


- Review the diagrams thoroughly before beginning.
- All electrical connections must be in accordance with local codes, ordinances and the National Electric Code.
- Disconnect power at fuse or circuit breaker before installing or servicing.
- Do not use outdoors.
- Do not mount in hazardous locations or near gas or electric heaters.
- Do not let power cords touch hot surfaces.
- Equipment should be mounted in locations and at heights where it will not be subject to tampering by unauthorized personnel.
- The use of accessory equipment is not recommended by the manufacturer.

CIRCUIT SCHEMATIC DIAGRAM:



LAMP WIRING DIAGRAM



 This marking indicates that this product should not be disposed with other household wastes throughout the EU. To prevent possible harm to the environment or human health from uncontrolled waste disposal, recycle it responsibly to promote the sustainable reuse of material resources. To return your used device, please use the return and collection systems or contact the retailer where the product was purchased. They can take this product for environmental safe recycling.