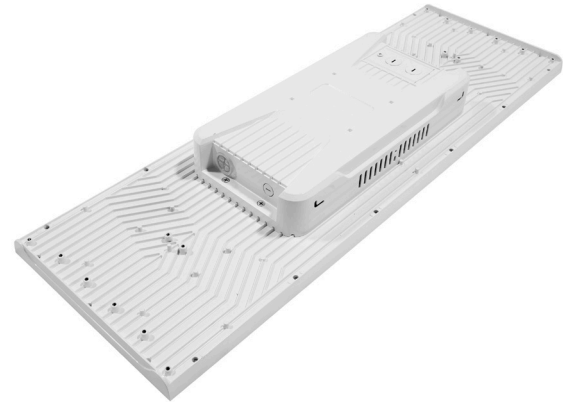
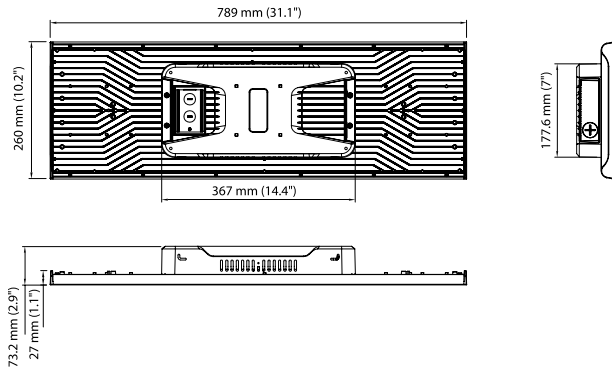




RoHS



Product description:

- Compliant with standards:
 - UL 1598
 - CSA C22.2 No. 250.0
- UGR <16.
- Selectable CCT and power.
- Its sleek, minimalist design and anti-glare construction provide effective eye protection
- The high-quality aluminum alloy housing is coated with electrostatic paint and features an optical-grade polycarbonate lens, offering corrosion resistance, oxidation resistance, and UV protection.

Applications:

Indoor stadiums, indoor sports halls, etc.

Electrical specifications	
Model no.	TLHBGUS220AWH
DLC ID	-
Power $\pm 10\%$	150W / 180W / 220W
Input voltage	AC120-347V
Frequency	50/60 Hz
Efficacy $\pm 3\%$	145 lm/W
Power factor	≥ 0.9
Dimmable	0-10V
Surge protection	Driver L-N 6kV, L/N-GND 6kV
Total harmonic distortion	<15%

Photometric specifications	
CRI	≥ 95
CCT	3500K / 4000K / 5000K
Beam angle	60°
Light output $\pm 3\%$	150W: 21 750 lm
	180W: 26 100 lm
	220W: 31 900 lm

Mechanical specifications	
IP rating	IP20 / IK10
Material	Die cast aluminum
Lens	Clear polycarbonate
Net weight	6 kg
Product dimensions	$\pm 31.1" \times 10.2" \times 2.9"$
	$\pm 789 \times 260 \times 73.2 \text{ mm}$
Operating humidity	0% ~ 95% RH (no condensation)
Operating temperature	-20°C ~ 50°C
Lumen maintenance	-

Optional accessories		
<p>TLHBGPM Pendant mounting bracket</p>	<p>TLHBGTU «U» mounting bracket</p>	<p>BLD-GM60R Emergency battery $\leq 320W$</p>