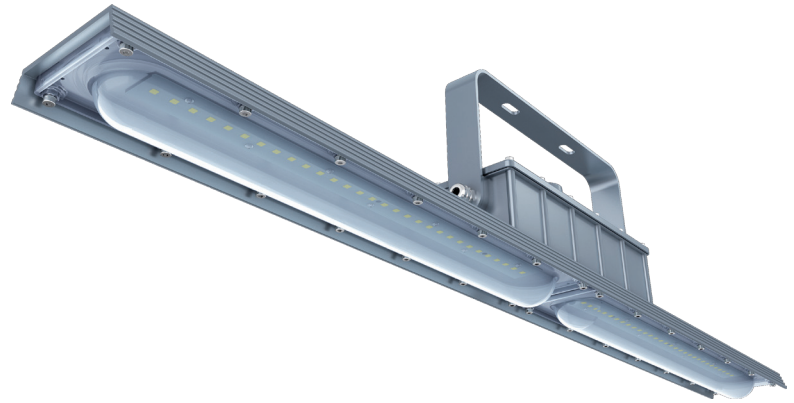
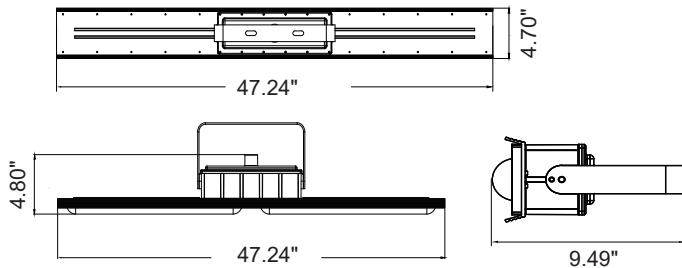


**Explosion proof**

**Specifications TLLE4F40H120P**
**Electrical specifications**

Model No.	TLLE4F40H120P
Power (W) ± 10%	40 W
Input Voltage (V)	AC200-480V, 50/60Hz
Efficacy ± 3%	140 lm/W
Power Factor (PF)	0.9
Surge protection	N/D

**Photometric specifications**

CRI	≥70
CCT	5 000 K
Beam angle	120°
Light Output ± 3%	5 600 lm
Dimmable	0-10 V

**Mechanical specifications**

IP Rating	IP66 / IP67
Material	Aluminum + PC
Lens	Clear
Net Weight	5.44 kg
Product size (mm)	± 1 193.8 x 101.5 x 101.6 mm
Product size (inch)	± 47.24" x 4.70" x 4.80"
Operating Humidity	N/D
Operating Temperature	-40°C ~ 60°C
Lifespan (L70)	>150 000 hours

**Product description:**

- UL-844 Dangerous places  
CAN / CSA-C22.2 NO. 137  
CLASS 1 DIV 2 GROUP A, B, C, D  
CLASS 2 DIV 1 GROUP E, F, G  
CLASS 2 DIV 2 GROUP F, G  
CLASS 3
- Savings on energy consumption compared to HPS / MH lighting.
- Warranty: 5 years.
- Other CCT available on request.
- Color: Gray.

**Applications:**

Areas with risk of explosion (gas emissions), areas with vapor or dust, petrochemical complexes, mines, etc.  
Designed for wet locations.  
Indoor and outdoor.