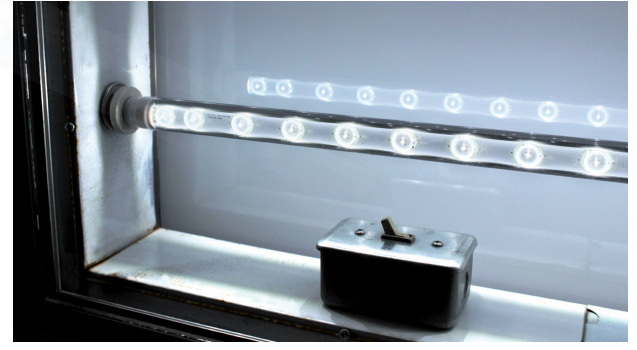


# TLT8S Series

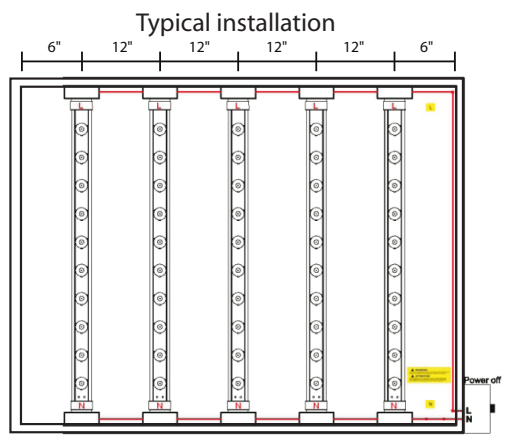
## Sign tube IP65

### Specifications:

- For new installation or retrofit
- 360° light distribution
- R17D rotatable connector
- 100-347 V power supply to both ends
- More than 50% energy saving
- CCT: 6 500 K
- Non-dimmable
- Operating temperature: -30°C to 55°C
- Does not work on ballast



For luminous sign cabinet illuminated from the inside by translucence. Made with aluminum and polycarbonate.



**Accessories (not included)**

MODEL	DESCRIPTION
LEV523	Female socket
LEV524	Male socket

**Double face tubes 100-347 V | CRI ≈ 80 | Power factor ≥ 0.95 | CCT: 6 500 K**

MODEL	WATT ±10%	Lm ±3%	Lm/W ±3%	REPLACE	LENGTH*	QTY PER BOX
TLT8SU18D15C	15	1 950	130	F18 / HO	404 mm / 15.91"	25 pcs
TLT8SU24D18C	18	2 340	130	F24 / HO	556 mm / 21.9"	25 pcs
TLT8SU30D20C	20	2 600	130	F30 / HO	708 mm / 27.87"	25 pcs
TLT8SU36D20C	20	2 600	130	F36 / HO	861 mm / 33.91"	25 pcs
TLT8SU42D25C	25	3 250	130	F42 / HO	1 012 mm / 39.84"	25 pcs
TLT8SU48D28C	28	3 640	130	F48 / HO	1 164 mm / 45.83"	25 pcs
TLT8SU60D36C	36	4 680	130	F60 / HO	1 469 mm / 57.84"	25 pcs
TLT8SU64D40C	40	5 200	130	F64 / HO	1 572 mm / 61.9"	25 pcs
TLT8SU72D40C	40	5 200	130	F72 / HO	1 774 mm / 69.84"	10 pcs
TLT8SU84D48C	48	6 240	130	F84 / HO	2 078 mm / 81.81"	10 pcs
TLT8SU96D50C	50	6 500	130	F96 / HO	2 385 mm / 93.9"	10 pcs
TLT8SU108D55C	55	7 150	130	F108 / HO	2 687 mm / 105.8"	10 pcs
TLT8SU117D56C	56	7 280	130	F117 / HO	2 915 mm / 114.76"	10 pcs
TLT8SU120D60C	60	7 800	130	F120 / HO	2 991 mm / 117.8"	10 pcs

Lumen maintenance: >85% at 100 000 hours

\* Total length including sockets

Informations are subject to change without notice. Pictures for illustration purpose only. rev.2.4.4