



TSBSPF8D

Integrated Oval 12V Panel Sensor



Description

This low-voltage sensor is designed for seamless integration into luminaires, enabling intelligent lighting control (LLLC) for panels, recessed luminaires, strip lights, roller lights, and certain architectural luminaires. This compact device combines natural light capture with passive infrared (PIR) presence detection to transform luminaires into smart lighting solutions. Thanks to its proprietary AlgoH2 algorithm, it optimizes detection accuracy while minimizing false alarms in a variety of application environments.

Features

- Integrated Bluetooth connectivity
- Daylight management and analog PIR detection technology with AlgoH2 algorithm
- Ultra-slim linear design with minimal height above the luminaire
- 4-pin connector for color adjustment

Requirements

- Installation requires a custom mounting hole, made using specific tools or an enclosure.
- Soft-dimming LED driver with 12V DC output

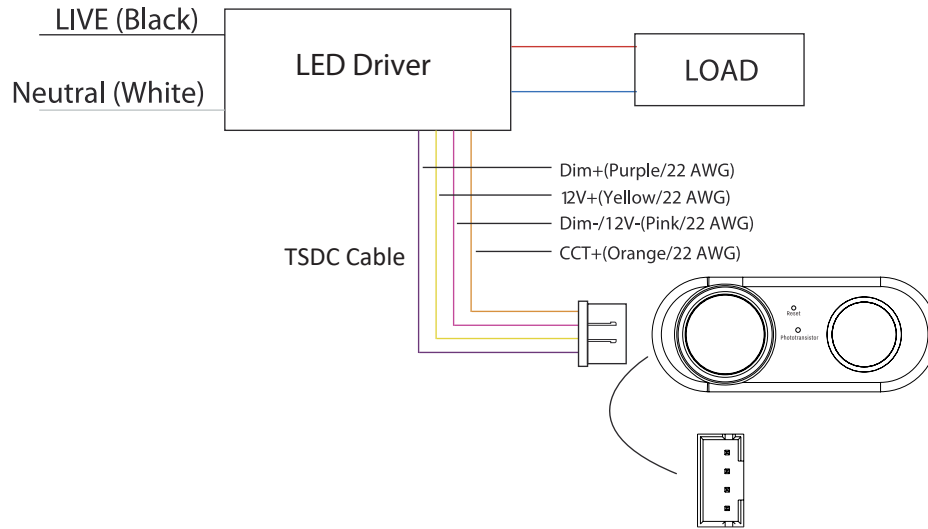
Specifications

Input voltage	DC 12V
Input current	25 mA Max
Input power	0.3 W
Output current	10 mA Max
Output power	0.1 W
Dimming	Class 2, 0-10 V DC 10 mA Max
Sinking current	10 mA Max
Bluetooth transmit	100' Max
Radiofrequency	2.4 Ghz±75MHz
Bluetooth version	5.0
Material	UL 94-5VA
Detection range	40' Max
Mounting height	18' Max
Indoor / outdoor use	Indoor only
Operating temperature	-30°C ~ 55°C, -22°F ~ 131°F
Storage temperature	-30°C ~ 85°C, -22°F ~ 185°F
IP rating	IP20
Color	White
Warranty	5 years
Compliance	UL8750, UL1376, RoHs CSA C22.2 No 250.13
Safety	cULus E547370 DLC: N-Z52LBD

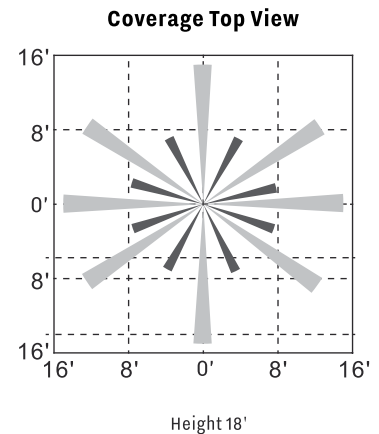
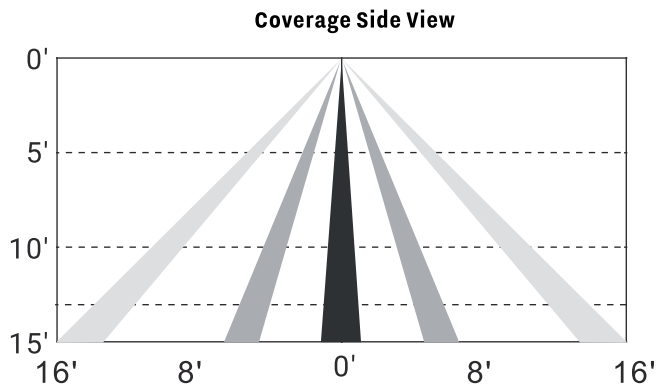
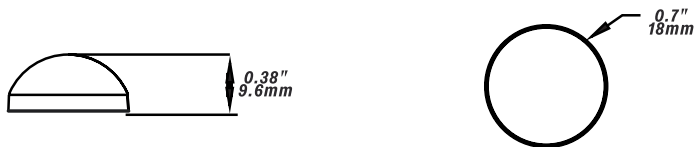
Ordering information - accessories

Model	Description
TSDC30 (included)	1007 22AWG 300V 80°C cable, length: 300 mm, PH2.0-4P at one end, tinned for 10 mm at the other end.
TSDC60	1007 22AWG 300V 80°C cable, length: 600 mm, PH2.0-4P at one end, tinned for 10 mm at the other end.
TSDC120	1007 22AWG 300V 80°C cable, length: 1200 mm, PH2.0-4P at one end, tinned for 10 mm at the other end.

Wiring

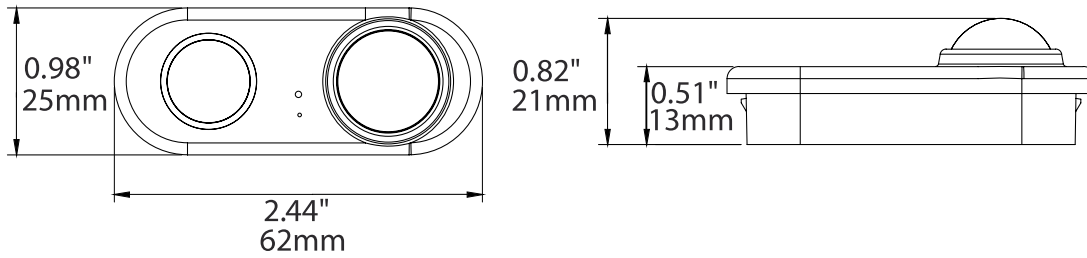


Coverage

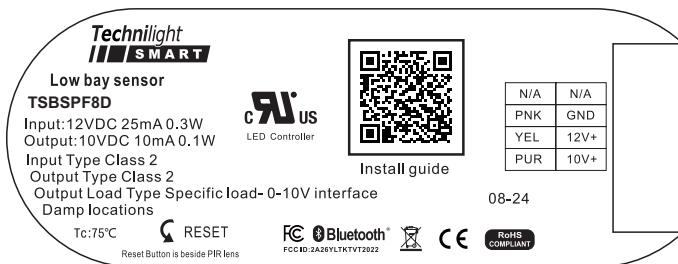


Information subject to change without notice. Pictures for illustration purposes only. rev. 2.6.4

Dimensions



Product label

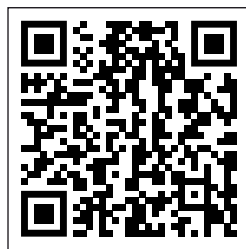


The Bluetooth word mark and logos are registered trademarks owned by Bluetooth SIG, Inc. and any use of such marks by Technilight Smart is under license. Other trademarks and trade names are those of their respective owners.

Application



Technilight Smart
Google play
Android



Technilight Smart
Apple store
iOS